



# REGATTA AROUND ZEALAND

Elsinore Sailing Club

Thursday, June 25. 2020



## Notice of Race

### 1 Rules

#### 1.1 Racing boat

The Racing boats must follow the “Racing Rules of Sailing (RRS, Part 2)”, and the regulations of the Danish Sailing Association, i.e. “Kapsejlsreglerne 2017-2020”.

During the night-time of the race, the “International Regulations for Preventing Collisions at Sea” will apply. For model boats and Standard Classes, the current class rules will apply.

#### 1.2 Cruising boat

Regarding the Cruising class the “Danish Sea Collision regulation” and the “International Regulations for Preventing Collisions at Sea” will apply round the clock.

It is mandatory that the national flag of each boat is raised round the clock.

Cruising-, Single- og Twohanded-boats are regarded as non-racing participants and must follow the the “Danish Sea Collision regulation”.

#### 1.3 Furthermore, the regulation (“Kapsejlsreglerne 2017-2020”) are changed as following:

- Penalty for breaking section 1.2 will be decided by the Protest committee and may be less than a disqualification.
- Rule 40 about the use of lifejackets is changed to become more restricted for Single- and Twohanded boats (see part 13.2). Members of all other crews must wear lifejackets during sailing (on deck and in the cockpit).
- Boats must display the supplied pennant, secured to the backstay minimum 2 meter above the deck, as from the race start until one hour after finishing the race. If not displayed, the participating boat will be penalized by one (1) hour added to the elapsed time.
- Rule 48.2 is changed; sailing in any Traffic Separation Zone or other sailing conflicting with any other limitation as described by the Regatta committee, will be penalized by one (1) hour added to the elapsed time, or by being disqualified (DSQ).
- Protest between Racing- and Cruising boats will be handled in accordance to the “Danish Sea Collision regulation” and the decision cannot be appealed.
- **Rule 60.1(b) and 62.1(a) are changed so protests/request for redress is not possible.**
- Rule 61.1(b) is changed so the protests originating from the Regatta committee / Protest committee will only be posted on the official race noticeboard.
- **Rule 61.3 is changed; the time limit for a request for redress is 2 hours at the latest after the incident. The protest/request can be given in by contacting the race Bureau by phone, however**

the protest/request shall additionally be given in a written form 2 hours at the latest, after having arrived into the area of finishing line.

- Rule 66 is changed; the time limit for a request for a reopening is on the last day of the race, before 12:00.

The exact wording of the changes will appear in the final version of these Sailing Instructions, to be found on [www.sjaellandrundt.dk](http://www.sjaellandrundt.dk), June 1st, 2020, at the latest.

The final sailing instructions may contain additional changes to the mentioned racing regulations.

## **2 CERTIFICATES**

Measurement/Class certificates are mandatory for all participating boats. Participants with a non-Danish made certificate shall provide a copy at registration. Changes to the certificate must be advised by email to the Regatta committee (sr@helsingorsejklub.dk) no later than June 17<sup>th</sup>, 2020. Cruising boats will be provided a LYS time correction factor, that cannot be appealed.

## **3 VHF INFORMATION**

Channel 72 is the service channel for information to the sailors regarding starting procedure, and all other general information. This channel is exclusively for listening.

## **4 TRACKING EQUIPMENT**

All boats will be equipped with GPS tracking equipment, that will be used for timing and taking measurements.

It is permitted to track and follow competitors via the internet.

Tracking information cannot be used in case of a protest however the tracking information might be used by the Protest committee as evidence when evaluating a dispute.

In case of a malfunctioning GPS tracking equipment or lack of power, the measuring time for finalization of the race will be the time for the delivery of the tracking device to the Regatta Bureau.

## **5 ADVERTISING**

Participating boats must display any advertising material selected and supplied by Elsinore Sailing Club.

## 6 PARTICIPATION and REGISTRATION

- 6.1 The Regatta is open for following classes:  
For One design- and Standard classes (as a minimum 5 participating boats must be registered to establish a separate class): DH, ORC and multihull boats with measuring certificate following TEXEL.
- 6.2 Boats and participants shall meet the following requirements: On each boat there shall be a minimum of 3 persons, except for Single- and Twohanded boats.  
Participants in the Racing-youth class must be below the age of 25 years however the Skipper must be at least 18 years.
- 6.3 All boats fulfilling the requirements to participate must register by completing the entry form on the Regatta website: [www.sjaellandrundt.dk](http://www.sjaellandrundt.dk), no later than June the 18<sup>th</sup>. 2020, at 24:00.

## 7 Entry FEES

- 7.1 Registration before February 1. 2020, entry fee is DKK 750,-
- 7.2 Registration after February 1. 2020 until May 1<sup>st</sup>, 2020, entry fee is DKK 900,-
- 7.3 Registration from May 1<sup>st</sup>, 2020 until the last day of registration June 20<sup>th</sup>, 2020 at 24:00, entry fee is DKK 1000,-
- 7.4 Registration of Racing-youth participants can take place until June 18<sup>th</sup>, 2020, entry fee is DKK 500,-
- 7.5 Sign up and payment, see: [www.sjaellandrundt.dk](http://www.sjaellandrundt.dk)

## 8 SCHEDULE of the REGATTA

- 8.1 **Registration**  
Final Registration takes place June 24<sup>th</sup> and 25<sup>th</sup>, 2020, at the Regatta Bureau (placed on the first floor of the Sailing Club; Elsinore Sailing Club, Address: Strandpromenaden 6, 3000 Elsinore) as of Wednesday, June 24<sup>th</sup> between 17:00 and 21:00, and Thursday, June 25<sup>th</sup> from 07:00.
- 8.2 **Skippers meeting for all races**  
Thursday the 25<sup>th</sup> at 08.30 in front of the Junior clubhouse of Elsinore Sailing Club (all starting classes). NB: Language Danish.
- 8.3 **STARTING TIME AND COURSES (preliminary)**
- |                                     |  |
|-------------------------------------|--|
| 1 <sup>st</sup> start approx. 10:20 | Course 1 through "Bøgestrømmen" (Racing-youth, draft < 1.7m)<br>Course 2 through "Grønsund" (Racing-youth, draft ≥ 1.7m) |
| 2 <sup>st</sup> start approx. 10:40 | Course 1 through "Bøgestrømmen" (Singlehanded, draft < 1.7m)<br>Course 2 through "Grønsund" (Singlehanded, draft ≥ 1.7m) |

3 <sup>rd</sup> start approx. 11:00	Course 1 through "Bøgestrømmen" (Twohanded, draft < 1.7m) Course 2 through "Grønsund" (Twohanded, draft ≥ 1.7m)
4 <sup>th</sup> start approx. 11:20	Course 1 through "Bøgestrømmen" (Cruising, draft < 1.7m) Course 2 through "Grønsund" (Cruising, draft ≥ 1.7m)
5 <sup>th</sup> start approx. 11:40	Course 1 through "Bøgestrømmen" (Racing, draft < 1,7m) Course 2 through "Grønsund" (Racing, draft ≥ 1,7m)
6 <sup>th</sup> start approx. 12:00	Course 2 Multihull boats through "Grønsund"
7 <sup>th</sup> start approx. 12.20	Course 3 round "Gedser" (Cruising, air draft > 22m)
8 <sup>th</sup> start approx. 12.40	Course 3 round "Gedser" (Racing, air draft > 22m)

## 9 MEASUREMENTS and CONTROL

Measurements and control requirements; Spot check before and after the Regatta (regarding boat data in the measurement certificate and safety equipment requirements under section 13.4.), might occur.

## 10 SAILING INSTRUCTIONS and REGISTRATION

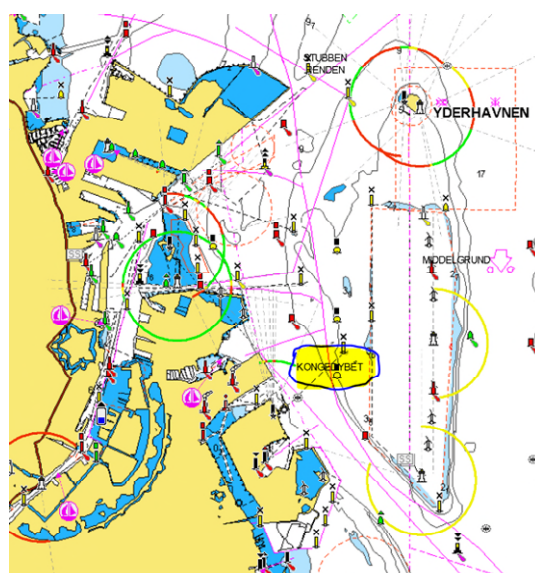
The final Regatta programme with sailing instructions, practical information, participant list and classes/fleet division will be available on the website: [www.sjaellandrundt.dk](http://www.sjaellandrundt.dk), and must be downloaded prior to the start of the Regatta.

## 11 LOCATION

The Elsinore North harbour will be the starting point for the Regatta.

## 12 Courses

All courses must pass "Kongedybet" near Copenhagen in a way not to interrupt the trade traffic.



12.1 **Course 1** (Smaller boats with a draft less than 1.7m and max. air draft of 20m.):

- Around Zealand passing through “Bøgestrømmen”:
- At “Sjællands Odde” it is allowed to sail through "Snekkeløbet", max. depth at normal water level 3.4m.
- Around “Stevns” the passage must take place in between the two following positions:  
Pos 1: 55 17.5N, 012 28.5E  
Pos 2: 55 18.2N, 012 34.0E
- Pass West of “Drogen rande” (G.FL 5s no. 01-17)
- Passing by Copenhagen must take place via “Kongedybet”

Distance: 216 Nm.

12.2 **Course 2** (Boats with draft of or above 1.7m and max. air draft of 22m.):

- Around Zealand and “Møn” by passing through “Grønsund”:
- At “Sjællands Odde” it is allowed to sail through "Snekkeløbet", max. depth at normal water level 3.4m.
- South of “Hestehoved Dyb” landfall mark.
- Around “Stevns” the passage must take place in between the two following positions:
  - Pos 1: 55 17.5N, 012 28.5E
  - Pos 2: 55 18.2N, 012 34.0E
- Pass West of “Drogen rande” (G.FL 5s no. 01-17)
- Passing by Copenhagen must take place via “Kongedybet”

Distance: 232 Nm.

12.3 **Course 3** (Large boats with air draft > 22 m):

- Around Zealand, “Lolland”, “Falster” and “Møn”.
- “Sjællands Rev Fyr” and “Gedser Landrev” South Marking YB WP 337 has to be rounded.
- Around “Stevns” the passage must take place in between the two following positions:
  - Pos 1: 55 17.5N, 012 28.5E
  - Pos 2: 55 18.2N, 012 34.0E
- Pass West of “Drogen rande” (G.FL 5s no. 01-17)
- Passing by Copenhagen must take place via “Kongedybet”

Distance: 276 Nm.



## 11.1 DIRECTION OF NAVIGATION

The direction of the circumnavigation will be displayed from the flagpole in front of the Elsinore Sailing club no later than 08.00 on the first day of the Regatta, i.e. Thursday June 25<sup>th</sup>. The final direction will be displayed from the starting Vessel.

Green flag: Zealand on starboard. Red flag: Zealand on port.

## 13 SAFETY

It is the Skipper's responsibility to ensure that the boat is in a proper condition and properly equipped according to the minimum requirements listed in section 13.4.

**All sailors must wear life jackets when on deck or in cockpit during the Regatta.**

The Regatta committee recommend the World Sailing OSR safety requirements for Category 3 boats (monohulls):

[www.sailing.org/tools/documents/mo3180104-%5B23484%5D.pdf](http://www.sailing.org/tools/documents/mo3180104-%5B23484%5D.pdf)

There will be additional requirements to Singlehanded- and Twohanded classes, in accordance with section 13.2.

### 13.1 CONTROL OF SAFETY EQUIPMENT

If a control of a boat's safety equipment before start of the Regatta (see section 13.4) demonstrates missing equipment, the specific boat either must redraw from the Regatta, or the Skipper must demonstrate that the safety equipment has been acquired.

In case of a control after the Regatta demonstrating missing safety equipment, the Skipper must prove that the safety equipment was used during the Regatta.

### 13.2 SPECIAL RULES for Single- and Twohanded boats

It is required for the Regatta participants to wear a lifejacket with safety light and safety harness from the start of the Regatta until finishing the Regatta. Sailors on deck must always wear harness, with a safety line attached. It is the sailor's responsibility to safely connect the safety line.

In order to enhance safety, a rest time of 4 hours (for every 24 hours of sailing) will be allowed for Singlehanded participants. Time compensation will be awarded in accordance to the sailing instructions (see section 14).

### 13.3 USE OF ENGINE

It is permitted to use the boat engine during the Regatta, for charging the battery without the propeller in gear. It is also permitted to use the engine in emergency situations to prevent collision, grounding or for providing assistance to another vessel.

Single-handed boats may use the engine when reaching port of refuge, and at port or anchor spot for resting within a radius of 100m.

Any use of engine shall reported in the Logbook with time for start and stop including a description of

the situation. The Regatta committee reserves the right to penalize a boat, if it concludes that a wrongful advance has been gained. The penalty will be added to the elapsed Regatta time.

#### 13.4 SAFETY EQUIPMENT

The following Safety equipment is required for all participating boats in the Regatta. However, equipment marked with (\*) is recommended, however not mandatory.

- 4 Red hand flares
- 2 Red parachute flares
- 1 Life-jacket with attached whistle per crew member (\*Strobe light affixed to the lifejacket)
- 1 Safety harness with safety line per crew member (\* minimum 2 pcs)
- 1 Installed safety line along the deck to fasten the safety line (\*)
- 1 Lifebuoy with automatic light
- 1 Wire cutter, or hacksaw with high-speed blade
- 1 Anchor with a minimum of 30m line
- 1 Compass
- 1 Foghorn
- 1 Radar reflector
- 1 Bucket or bilge pump suitable for the boat size
- 1 Line to throw (floating) min 15 meter
- 1 First aid kit adequately equipped
- 1 Radio receiver with FM and AM
- 1 Watertight torch with spare batteries
- 1 Fire extinguisher
- 1 VHF
- 1 Mobil phone, the phone number must be reported at the registration for the Regatta participation
- Proper anchoring mark and light for correct anchoring signs

#### 14 RESTING TIME FOR SINGLEHANDED BOATS

Up to 4 hours rest time for every 24 hours sailed by Singlehanded boats. The resting time will be subtracted elapsed sailing time.

#### 15 TIME LIMIT

The time limit for all boats is Sunday, June 28<sup>th</sup>, 2020 at 15:00.

Participating boats arriving Elsinore North harbour after the mentioned time limit scores DNF (Did not Finish).

#### 16 HARBOUR BERTHING

There are no reserved berths for the Regatta participants in Elsinore North harbour. However, all berths with a green sign can be used free of charge. Notice, if there are dates on the green sign showing when the owner will return, please respect this.

Boats with a draft above 3,5m. can use the Culture harbour Kronborg.

**Berthing fees:** Free of charge for the participating boats in the period from Saturday June 20<sup>th</sup> from

16:00 until Monday July 29<sup>th</sup>, at 16:00. If leaving the boat without crew before or after the free period, please contact the Harbour Duty by mail or phone: [havnevagten@havnevagten.dk](mailto:havnevagten@havnevagten.dk), or at +45 25311080. Please, pass on information about name, number of the pier and the berth. The current rules of the harbour will apply.

## 17 HARBOUR INFORMATION

Harbour access-cards for toilet and bathing facilities, washing machine and electricity are available from the electronic payment machines located various places on the harbour. The guestroom of the Harbour's office contains 2 PCs with free Internet access. For Internet access in the Harbour area, please use the User ID: havn.

### **Opening hours at the Harbour Master's office**

Monday - Wednesday and Friday: 08:00 – 15:00

Thursday 08:00 – 17:00

Phone: +45 49281080 (office)

Webpage: [www.helsingor-havne.dk](http://www.helsingor-havne.dk)

Mail: [havnevagten@helsingor.dk](mailto:havnevagten@helsingor.dk)

**Defibrillator is in the front room at the Harbour Master's Office.**

## 18 LIMITATION FOR HAULING

From June 25, 2020 until the end of the race, participating boats must not be taken out of the water without prior acceptance from the Regatta Committee.

## 19 TRASH

It is NOT allowed to throw trash in the water. Trash must be kept on board and discharged after the Regatta. Bins are available on the harbour site.

## 20 RADIO COMMUNICATION/ ELECTRONIC EQUIPMENT/AUTOPILOT

All kind of electronic or electrical equipment, which doesn't conflict with rule 42, is allowed and hereby exempting rule 52.

## 21 REPORTING DUTY

21.1 All boats must deliver a complete crew list at the registration at the Bureau (regarding registration, see section 8.1). If the list is not delivered or incomplete the boat will be regarded as "not starting" (see DNS).

The crew list template can be found on the website [www.sjaellandrundt.dk](http://www.sjaellandrundt.dk), and must be printed/filled-out before registration in the Bureau.

21.2 It is mandatory for all boat to install the GPS tracker provided at the registration.



21.3 Participants shall no later than one (1) hour after own finishing time return the logbook, the participant number and the GPS tracker to the Regatta Bureau.

Discontinued boats must leave in their participant number and the GPS tracker to the Bureau as fast as possible, however before closing time of the Bureau (Sunday June 28<sup>th</sup>, at 18:00).

Lost or damaged GPS trackers will be charged DKK 1500,-

## 22 PRIZES

There is a prize for each 5 starting boats in each fleet.

There is a prize to winning Cruising boat.

There are finishing prizes to all boats completing the Regatta.

Prizes will be drawn among all finishing boats.

## 23 DISCLAIMER

Boats and sailors participate in the Regatta completely at their own responsibility and risk (see RRS 4, Decision to Race.)

The organizer, Elsinore Sailing Club, will not accept any liability for any damage to equipment or personal injury or death sustained in conjunction with or prior to, during, or after the Regatta.

## 24 INSURANCE

Each participating boat must have valid third-party liability insurance.

## 25 FURTHER INFORMATION

For further information, please see the website: [www.sjaellandrundt.dk](http://www.sjaellandrundt.dk).

## 26 References

- Danish Sea Collision regulation: [Bekendtgørelse om søvejsregler Bek 1083 af 20/11-2009](#)
- Regulation of the Danish Sailing Association: [Dansk Sejlunion Kapsejlsreglerne 2017-2020](#)
- RRS: [Racing rules of sailing part 2](#)

## 27 Abbreviation

- DNF: Did not finish
- DNS: Did not start
- DSQ: Dis-qualification
- [LYS](#): LYS is a timing system based on Swedish, German and English LYS-systems
- RRS: Racing Rules of Sailing
- TEXEL: Measuring rule for multihull boats